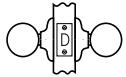
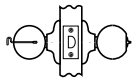


## Regina & Athens Knobs

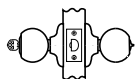
### Functions



**Passage/Hall/Closet:** Both knobs & levers always free.  
**1000/1002UL -F75**



**Privacy/Bed/Bath:** Both knobs locked or unlocked by turnbutton inside. Outside knob unlocked by emergency key.  
**3000 - F76**



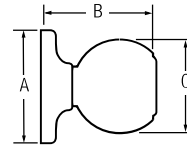
**Entry:** Both knobs locked or unlocked by key outside or turnbutton inside.  
**5000/5002UL - F82**



**Half Dummy Trim, Surface Mounted:** For doors where only a pull is required. No operation.  
**7000 - Int.**

*Note: Description (ANSI/BHMA functions are listed in italics)*

### Dimensions



Design	A	B	C
Athens™	2-9/16"	2-3/8"	2"
Regina™	2-9/16"	2-7/8"	1-3/4"

## Winston, Grapevine, Daylon, & Layton Levers

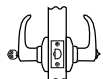
### Functions



**Passage/Hall/Closet:** Both levers always free.  
**1000/1002UL -F75**



**Privacy/Bed/Bath:** Both levers locked or unlocked by turnbutton or push button inside. Outside lever unlocked by emergency key.  
**3000/4000 - F76**



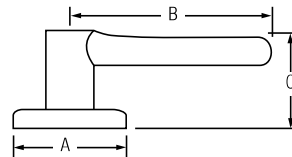
**Keyed Entry Lever:** Both sides locked or unlocked by key outside or turnbutton or push button inside.  
**5000/5002UL/6000 - F82**



**Half Dummy Trim, Surface Mounted:** For doors where only a pull is required. No operation.  
**7000 - Int.**

*Note: Description (ANSI/BHMA functions are listed in italics)*

### Dimensions



Design	A	B	C	C (keyed)
Winston™	2-9/16"	3-5/8"	2-3/8"	2-3/8"
Grapevine™	2-9/16"	3-3/4"	2-1/2"	2-1/2"
Layton™	2-9/16"	3-5/8"	2-3/8"	2-3/8"
Daylon™	2-9/16"	3-5/8"	2-3/8"	2-3/8"